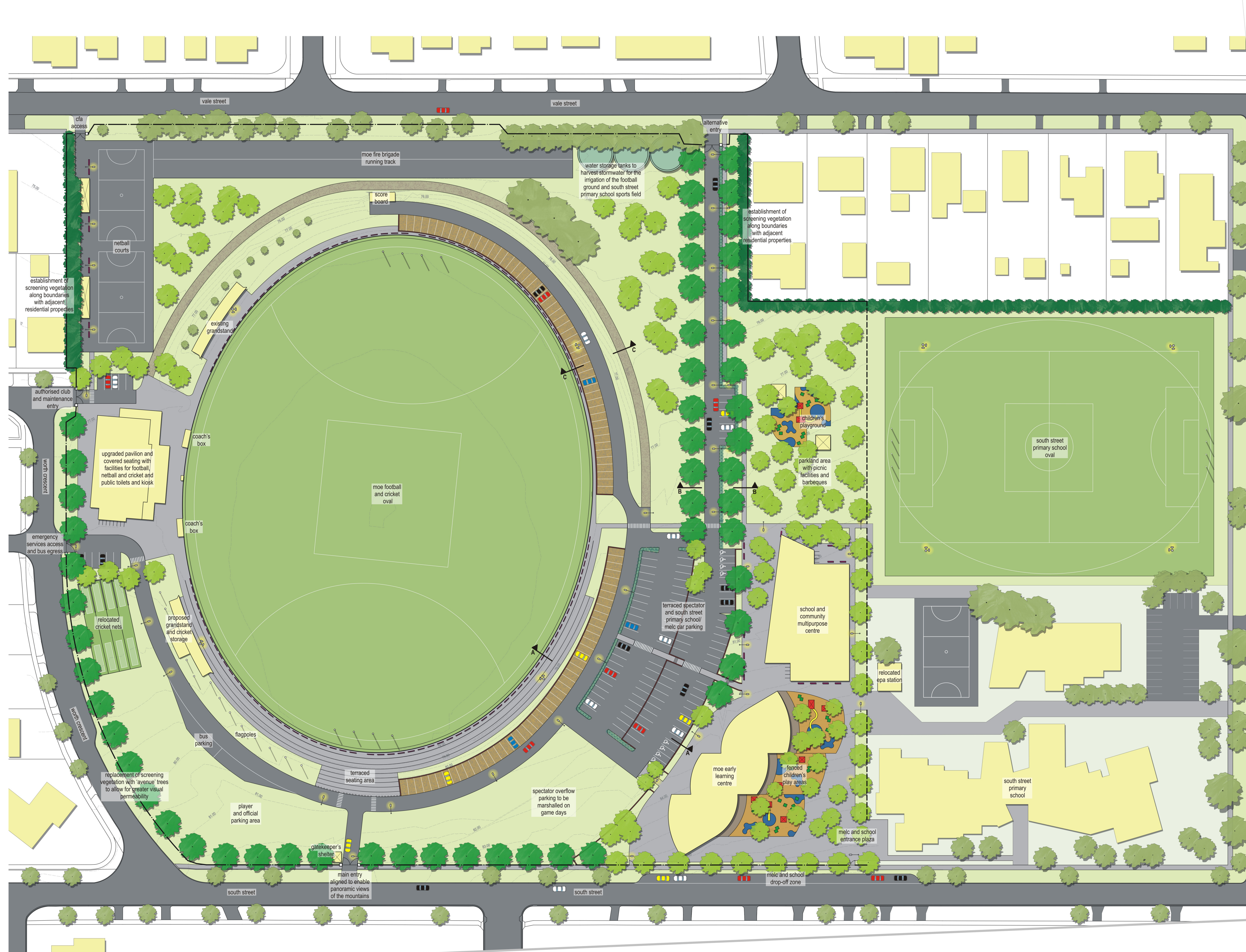




# ted summerton reserve moe master plan



### legend

- existing trees to retain
- proposed canopy trees
- proposed avenue trees
- proposed screening planting
- proposed water sensitive urban design treatment
- proposed drought tolerant grass
- irrigated sporting oval with 'transcontinental' couch grass
- concrete paths
- asphalt vehicular roads
- ecotrihex permeable paving in 'sunstone'
- gravel maintenance access
- shelters with picnic facilities, barbecues, bins and drinking fountains
- buildings
- 1800mm high black palisade fencing
- 1200mm high school boundary fence
- existing spectator benches painted 'moe lions' maroon
- blockwork retaining wall
- 0.50m interval contours
- lighting
- bicycle racks
- 250,000L water tanks

**DRAFT**

Project Ref: 08.571  
 Dwg No.: LCD-005  
 Scale: 1:500@B1  
 Date: 07.05.09  
 Revision: D



hansen partnership pty ltd  
 melbourne | vietnam  
 level 4 136 exhibition st  
 melbourne vic 3000  
 t 61 3 9654 8844 f 61 3 9654 8088  
 e info@hansen-online.com.au  
 w hansen-online.com.au