

**Latrobe City**  
Sustainability Action Plan  
2023-2033





Latrobe City Council acknowledges that it operates on the traditional land of the Brayakaulung people of the Gunaikurnai nation and pays respect to their Elders past and present.

# Message from the Mayor

**Local governments have a close connection to their community and environment. Working towards environmental sustainability - through policy, direct action and working in collaboration with the local community and other stakeholders - is essential.**

As the local planning authority, manager of reserves, parks and open space, and operator of community infrastructure, Council is responsible for many activities which have an influence on the impact upon the environment. Local government can be leaders by setting an example for the community, building community awareness through education, creating pathways to participation and promoting change in the way we utilise and conserve our environment.

This Plan represents a collaborative effort, bringing together the perspectives of community leaders, organisations and individuals who are passionate about shaping a sustainable future. The Plan responds to the priorities set out by the Community Vision, Council Plan and Municipal Health and Wellbeing Plan and our legislative responsibilities to preserve our natural environment and respond to the challenges of a changing climate. It is a testament to our shared commitment and determination to make Latrobe City a leading example of sustainable development in our region.

The community have implemented a range of actions to reduce their impact on the environment and we know that residents view the environment and Council leadership in this area as a high priority.

This Plan details practical, achievable and measurable priority actions that Council will undertake over the next 10 years. It will support community awareness, and foster partnerships within the community to support essential sustainable environmental activities.

The actions will outline how we will work to improve sustainability within Council's operations, and how we will support and advocate in partnership with the community on key matters.

We are committed to reducing greenhouse gas emissions, increasing energy efficiency, promoting renewable energy adoption, and preserving our natural heritage as evidenced by a range of environment and sustainability projects undertaken in recent years including - Biogas generator, Solar projects, Public Lighting upgrade and Geothermal heating at the Gippsland Regional Aquatic Centre.

Latrobe City Council recognises the importance of providing leadership, advocating on behalf of the community. We remain committed to ensuring the health of our natural environment now and into the future. Working together, Latrobe City will be recognised as a leader in green technologies, clean energy, recycling and resource management. A region where people are healthy, safe and live as a connected, sustainable and well resourced community.

By working hand in hand, we can ensure that our region remains a proud example of sustainability and progress. It is through our collective efforts that we can truly create lasting change and build a sustainable legacy for future generations.



**Cr Darren Howe**

Mayor  
Latrobe City Council







## Strategic directions

Our City has natural features and liveable areas that are easy to access and our beautiful environment is our heart and pride. We have provided a healthy environment for our community and for future generations while supporting meaningful employment and lifelong opportunities.

---

### Table of Contents

|  |    |
|--|----|
| Why do we need a Sustainability Action Plan? | 06 |
| Your voice                                   | 07 |
| Our direction                                | 08 |
| Our priorities to 2033                       | 09 |
| <i>Towards Net Zero emissions</i>            | 10 |
| <i>Adapting to a changing climate</i>        | 13 |
| <i>Greening Latrobe City</i>                 | 15 |
| <i>Connecting community with nature</i>      | 18 |
| <i>Creating a circular economy</i>           | 20 |
| Definition of terms                          | 22 |

---



# Why do we need a Sustainability Action Plan?

Latrobe City Council stretches from the Alpine Ranges in the north and to the Strzelecki Ranges in the south. It is home to many beautiful parks and reserves and a wide range of native flora and fauna.

Amongst the native fauna are a number of threatened species, such as Greater Gliders, Strzelecki Gum and a critically important population of Koalas with a unique genetic diversity.

Latrobe City Council values our natural environment and biodiversity and recognises the critical part that a healthy environment plays in maintaining a healthy and thriving community.

Sustainability means ensuring that we fulfil the needs of the current generation without impacting future generations. In the context of this plan, it means continuing to deliver our processes and operations in such a way we achieve a balance between economic growth, environmental conservation and the social wellbeing of our community.

A range of legislative changes in recent years also require local government to plan for and respond to climate change. This means a shift towards working to embed climate adaptation and mitigation actions into business processes across the board.

Latrobe City Council delivers on these responsibilities across a range of services. It is noted that the Sustainability Action Plan does not detail statutory service responsibilities, rather it focusses on priority actions and projects necessary to deliver upon the directions identified by the Community Vision, Council Plan and the Municipal Public Health and Wellbeing Plan.



# Your voice

The Sustainability Action Plan 2023-2033 draws upon the cumulative results of community engagement conducted by multiple agencies from 2018-2022.

In 2021, over 1500 people across all ages put forward their ideas for Latrobe City's future. The Community Vision was informed by a community survey, targeted conversations, listening posts and input from a community panel.

This extensive community engagement activity conducted by Council has been reinforced by additional research analysis and prior engagement. Throughout all of the community engagement conducted, similar themes emerged.

## Community engagement results







## Our community vision

In 2031 Latrobe City will be known for being **smart, creative, healthy, sustainable and connected**. It will be the **most liveable** regional city and at the forefront of **innovation**.

Working together we are a **diverse, connected and resilient** community, supporting the **equitable diversification** of our economic base and transition towards a **low emissions** future.

We are known as a community that is **equitable, liveable and sustainable**, with a continued focus on **healthy lifestyles** supported by high quality **recreational and cultural** facilities and a natural environment that is **nurtured and respected**.

---

## Our direction

The Community Vision emphasises how important a connected, healthy, safer and sustainable environment is to our community.

The Community Vision sets out the objectives to be achieved by the Council Plan and the Municipal Public Health and Wellbeing Plan.

Together these plans establish the strategic direction and priorities of Council and provide the basis of the themes set out by the Sustainability Action Plan.





# Our priorities to 2033

This Sustainability Action Plan is centred on five themes, to be achieved by a range of actions over the coming ten years.

Actions listed by this Plan may be delivered with existing available resources, be subject to future budget allocations or grant funding.

The actions describe how we will continue to improve sustainability within Council's operations and how we will support and advocate on behalf of the community on key matters.

While Council has significant ability to influence sustainable outcomes, it cannot do this alone. Every individual, business, community and level of government has a key part to play in our collective journey to reduce our impact on the environment and ensure adaptation and resilience in the face of climate change. Under current warming scenarios we are already seeing escalating and accelerating changes in our climate.

Council and community have already demonstrated a range of actions to reduce their impact on the environment and we know that residents view the environment and Council leadership in this area as a high priority issue.

## Five themes



**TOWARDS NET ZERO  
ENERGY EMISSIONS**



**ADAPTING TO A  
CHANGING CLIMATE**



**GREENING  
LATROBE CITY**



**CONNECTING COMMUNITY  
WITH NATURE**



**CREATING A  
CIRCULAR ECONOMY**





# Towards Net Zero energy emissions

## Council and Community

Electricity use represents 62 per cent of Latrobe City Council's total greenhouse gas emissions. Council will continue to embrace new investment in renewable energy and efficiencies to achieve net zero Council emissions.

Key initiatives include upgrading public street lighting to LED, solar panel installations across Council buildings and increasing the capacity of Council's biogas generator by harnessing additional landfill gas.

Latrobe City Council will work towards achieving **Net Zero greenhouse gas emissions by 2035**, setting progressive targets as follows:

- 2025 energy efficient lighting installed across all Council facilities
- 2028 generating 100 per cent of our day time electricity needs from renewable sources
- 2030 electrification of all Latrobe City facilities to remove reliance on natural gas (excluding aquatic centres)
- 2035 transition Council fleet to electric vehicles
- 2040 electrified Latrobe City Council aquatic centres

Council's commitment to achieving the above targets is highlighted by a commitment to invest \$3.95 million to allow the delivery of energy efficient public lighting upgrades and solar panel installations across Latrobe City facilities from 2023. The result of this investment serves to reduce Council's carbon footprint by up to 30 per cent (or an estimated 2500 tonnes of greenhouse gas emissions).

Council will also work in partnership with community and industry to deliver programs to reduce community emissions and lower business and household energy costs.

### **COUNCIL PLAN AND MHWP DIRECTIONS**

- Work towards net zero energy emission across Latrobe City Council operations through the delivery of new energy initiatives, efficiencies and offsets.
- Offset Council fleet emissions.
- Deliver actions to improve the sustainability and efficiency of Latrobe City Council buildings and infrastructure



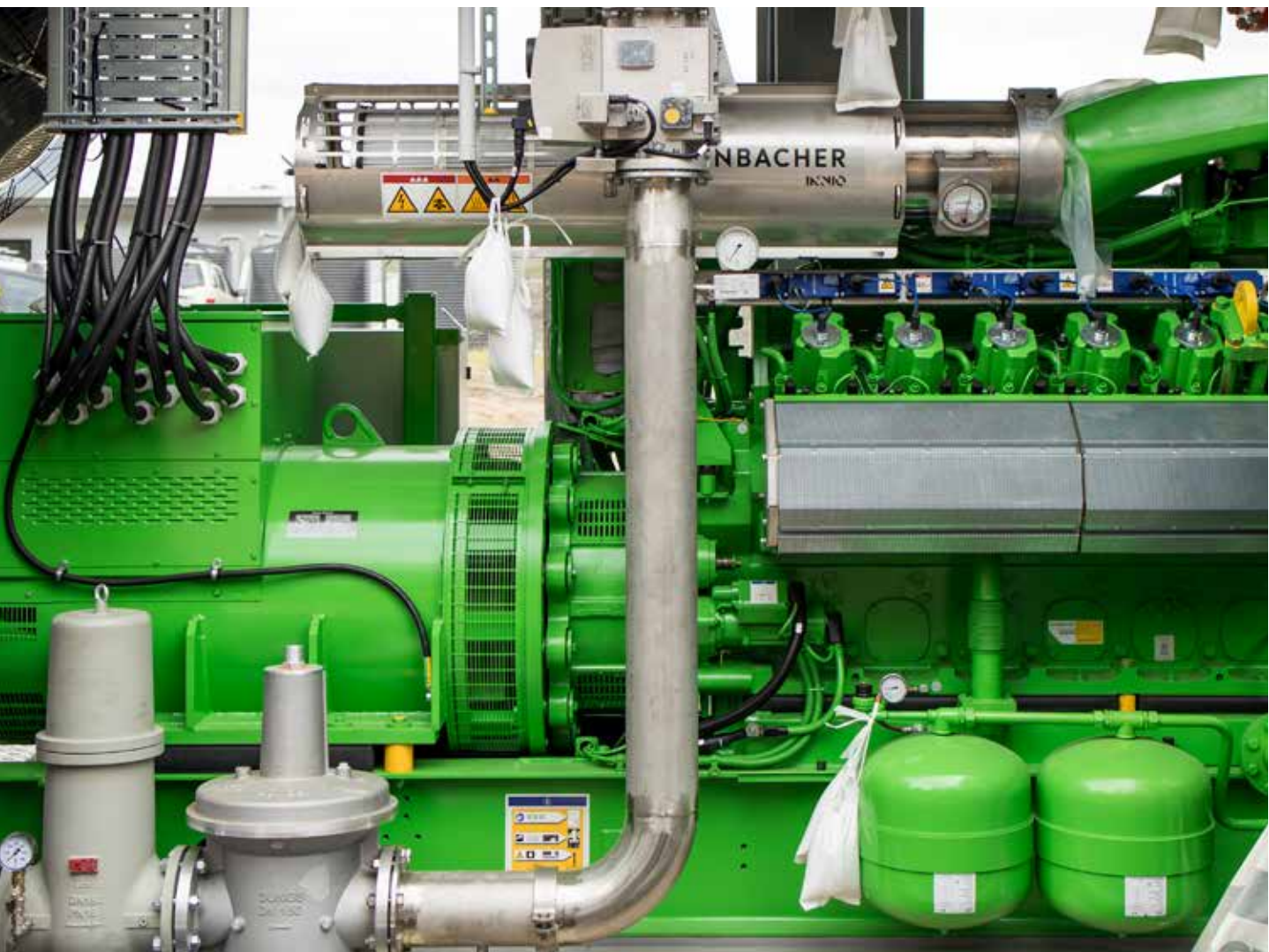
## Towards Net Zero Council Emissions

| Actions  | Timeframe | Outcomes  | Resourcing                               |
|--|-----------|---|--|
| Develop a Net Zero Strategy setting out targets to achieve Net Zero Council emissions by 2035, including methods for calculating emissions and where reductions have been achieved. Produce a report annually to provide updates on emissions reductions   | 2024-2025 | Net Zero Strategy including 50 percent reduction in scope one and two emissions by 2028, 100 percent renewable energy by 2028 | Within existing resources                |
| Introduce renewable energy and environmental sustainable design requirements for all Council owned and operated buildings  | 2024-2025 | Adoption of Council policy. Lower greenhouse gas emissions, reduction in operating costs                                      | Within existing resources                |
| Installation of 1.7 MW of additional solar generation over the next 5 years on existing Council assets   | 2023-2024 | Energy savings, reduced greenhouse gas emissions  | Budget approved                          |
| Undertake energy efficiency audits to identify opportunities to reduce energy use across Council facilities  | 2023-2025 | Energy savings actions identified for implementation  | Within existing resources                |
| Prioritise the upgrade of all public and Council lighting (including Council run events) to more energy efficient technology (eg, LED or, where appropriate, solar)  | 2023-2024 | LED public lighting installation completed. Energy savings, reduced greenhouse gas emissions                                  | Budget approved                          |
| Install energy efficient lighting across all Council facilities and assets   | 2026      | Energy savings, reduced greenhouse gas emissions  | Future budget allocation / grant funding |
| Increase generation output from the biogas generator by harnessing additional landfill gas   | 2023-2024 | Increased energy generation and revenue   | Budget approved                          |
| Complete a business case to investigate the feasibility of transition of Council fleet to electric vehicles  | 2024-2025 | Business case completed, Council adopt recommendations  | Within existing resources                |
| Develop an Environmental Management System to inform Council's environmental sustainability across all areas of operation (and capital works, and procurement). Explore options to adjust procurement policy to include whole of life cycle costs including transport costs, in cost analysis and prioritise sustainable materials such as local timber. | 2024-2026 | Environmental Management System complete  | Within existing resources                |
| Pursue the utilisation of battery technologies across Council facilities   | 2024-2026 | External funding opportunities identified and sought  | Budget allocation / grant funding        |
| Complete business case for selected facilities to support the electrification of Council assets and equipment, remove reliance on gas and achieve energy independence  | 2024-2026 | Greater understanding of cost benefit equation of electricity instead of gas reliance and recommendations                     | Within existing resources                |
| Complete annual revegetation programs to contribute to the offsetting of Council emissions   | Ongoing   | No less than 10,000 trees and shrubs planted annually   | Within existing resources                |
| Continue to participate in multi-Council alliances and groups for regional projects  | Ongoing   | Joint Council resources for increased output and efficiencies   | Within existing resources                |



## Towards Net Zero Community Emissions

| Actions   | Timeframe     | Outcomes   | Resourcing   |
|---|---------------|--|--|
| Explore the option to support local business by introducing the Environmental Upgrade Finance program, providing access to low cost financing and repayment arrangements via Council's rates system | 2024-2025     | Local business have access to finance to undertake environmental upgrades to lower their operating costs. See <a href="http://www.sustainability.vic.gov.au/energy-efficiency-and-reducing-emissions/in-a-business/finance-energy-upgrades-in-you-business/environmental-upgrade-finance-for-business">www.sustainability.vic.gov.au/energy-efficiency-and-reducing-emissions/in-a-business/finance-energy-upgrades-in-you-business/environmental-upgrade-finance-for-business</a> | Budget allocation / grant funding                  |
| Develop a policy for the installation of EV charging station which aligns with state and federal policy   | Ongoing       | Reduced vehicle emissions and operating costs  | Within existing resources                          |
| Introduce grant program to support community actions which adapt or reduce the impacts of climate change  | 2024          | Improve community access to financial assistance to support climate adaption   | Utilise revenue for biogas generation certificates |
| Work with partners to explore expanded utilisation of geothermal technology including at the Gippsland Industry Park – Morwell  | 2023-2025     | Greater understanding of cost benefit equation of geothermal and potential future application.   | Grant funding                                      |
| Advocate for a just transition and support the establishment of renewable energy generation within Latrobe City region, leveraging the skills and experience on the local workforce                 | Next 10 years | Fair and reasonable transition from traditional energy sources for the benefit of the whole community  | Within existing resources                          |





# Adapting to a changing climate

Observed and anticipated changes to climate within the our region include changes in rainfall patterns, challenges for water supply and agriculture, higher temperatures, increased likelihood of bushfire impacting communities, increased storm activity and loss of biodiversity.

Community resilience will come from recognising and addressing challenges that our unique communities will face as a result of changing climatic conditions. Latrobe City Council recognises the important role that we have in supporting the community to develop skills and knowledge needed to respond to these challenges.

Local government navigates the expectations of community, business and other levels of governments and the needs of the environment.

The Victorian Government has introduced a range of legislative and regulatory responsibilities for local government to both mitigate and adapt to climate change. Latrobe City Council recognises our role in assisting communities to plan and respond to the challenges of a changing climate, as well as opportunities to lead local action.

Latrobe City Council will continue to deliver actions to support environmental sustainability, emergency management preparation and response and aid in community health-related activities. It is also understood that Council services, infrastructure and other critical functions are not presently adaptive or resilient to anticipated impacts of climate change and that further planning and investment will be necessary.

Our response to climate change will require collaboration with community representing multiple perspectives, acting in good will and in the interests of the whole of the community and the environment.

## **DIRECTIONS FROM COUNCIL PLAN AND MHWP**

- Ensure health and wellbeing planning is central to Council promoting safe communities, positive mental and physical health programs, resilience and connection to built and natural environments
- In partnership with community and business, deliver sustainability initiatives and take actions to adapt to a changing climate
- Work with government to address the importance of water security
- Engage with and support our communities to prepare and be resilient to the challenges of emergencies and disasters
- Progress actions to ensure environmentally sustainable subdivision principles are applied
- Increase urban greening across new and existing neighbourhoods to reduce the impacts of urban heat, improve amenity and biodiversity
- Support the Latrobe community to mitigate and adapt to the impacts of climate change



| Actions   | Timeframe | Outcomes   | Resourcing                        |
|---|-----------|--|-----------------------------------|
| Introduce stronger/clearer Environmentally Sustainable Design requirements to the Latrobe Planning Scheme and support industry to deliver best practice sustainable subdivision design outcomes   | 2024-2025 | ESD design principles are imbed into the Latrobe City Council Planning Scheme and applied to all new developments<br>Participation in the Victorian Government Sustainable Design Assessment in the Planning Process (SDAPP) | Within existing resources         |
| Encourage the use of permeable surfaces wherever possible in new Council works  | Ongoing   | Reduced run off in urban environments  | Within existing resources         |
| Develop an Emergency Management Strategy to imbed risk assessment, mitigation and response into policies and processes across all areas of Council  | 2024-2025 | Emergency management risk and response to extreme weather in place to support community adaptation and response  | Within existing resources         |
| Promote and facilitate the use of Council libraries and leisure centres as refuges on extreme heat days   | Ongoing   | Reduced risk of heat impacts to vulnerable members of the community  | Within existing resources         |
| Install battery storage and generator at Latrobe City Council Morwell works depot to safeguard emergency response capabilities  | 2024-2025 | Secure energy supply at Council depot to support emergency response  | Budget allocation                 |
| Assist with the establishment of local community energy generation to improve resilience of communities vulnerable to power outages   | 2025-2026 | Communities at higher risk of disruption to electricity supply have access to distributed and localised energy   | Within existing resources         |
| Establish emergency community hubs in higher risk communities to ensure access to electricity, secure water supply in preparation for emergencies such as power outages, storms, floods and fire  | 2024-2025 | Community hubs established with energy and water security in our most vulnerable communities   | Grant funding                     |
| Deliver Water Sensitive Urban Design and other water saving initiatives across urban and rural communities, including the use of reclaimed water for irrigation at recreation reserves, sports grounds and bush reserves and actions identified by the Integrated Water Management Plan | Ongoing   | Reduced water demand and associated costs savings  | Budget allocation / grant funding |
| Maintain community bushfire fuel management plans to reduce the risk and impact of bushfire on communities  | Ongoing   | Reduce exposure of communities to bushfire   | Within existing resources         |
| Develop an Urban Forest Strategy focusing on increasing canopy cover in urban environments throughout the municipality, tying in with habitat corridor wherever possible  | 2023-2026 | Increase canopy cover in urban areas, habitat connectivity and biodiversity outcomes   | Budget allocation                 |
| Deliver community education programs and support to households and local businesses to reduce energy demand and improve reliability through utilisation of battery and solar energy   | Ongoing   | Increase resilience of community from secure energy supply   | Within existing resources         |
| Complete assessment of vulnerability to climate change impacts across Council infrastructure, land use planning, development, corporate and community services  | 2025-2026 | Risk assessments determine priority actions and resources to reduce impact of more frequent extreme weather events   | Budget allocation / grant funding |



# Greening Latrobe City

Latrobe City includes a number of important areas of biodiversity which are home to flora and fauna of national and state significance, including Central Gippsland Plains Grassland, Cool Temperate Rainforest and Gippsland Red Gum Grassy Woodland and Associated Native Grassland.

Location of native habitat, waterways, lakes, forests, and rural views and vistas to natural landscapes greatly add to the liveability, identity and health of Latrobe City. The municipality also contains areas of productive agricultural land.

The southern portion of the municipality incorporates the Strzelecki Ranges which contains large patches of remnant vegetation including significant stands of cool temperate rainforest and a number of rare and threatened species of state and national significance, including the Strzelecki Koala, Slender Tree-fern, Powerful Owl and Greater Glider.

Latrobe City Council is committed to the protection and enhancement of the natural environment recognising the interdependency with the health and wellbeing of our community.

Key opportunities include strengthening biodiversity corridors to support the movement of wildlife, ensuring the rehabilitation of mine areas provide beneficial outcomes for our community and environment and supporting efforts to preserve rare and endangered flora and fauna.

Urban greening is also a priority ensuring that future growth is commensurate with access to services and the protection of natural resources and environment.

## **DIRECTIONS FROM COUNCIL PLAN AND MHWP**

- Work in partnership with indigenous custodians in sustainable land management and preservation and regeneration of our natural environment
- Restore waterways and bushland areas to improve health and wellbeing of community and presentation of Latrobe City as well as our important biodiversity values
- Invest in increased urban greening initiatives and increasing the City's tree canopy in appropriate sites using suitable species in built up areas for improved amenity and reduced heat stress
- Advocate for improved maintenance, planting and regeneration of the City's waterways and state roads
- Continue to work with partners to create linking vegetation corridors
- Advocate with State and Federal Government to ensure the rehabilitation and repurposing of mine areas to support a sustainable and prosperous Latrobe City
- Improve the amenity and presentation of Latrobe City's town entrances, activity centres and public spaces through signage, art and plantings and greening of the City



| Actions  | Timeframe   | Outcomes  | Resourcing                           |
|--|-------------|---|--------------------------------------|
| <p>Work in partnership with GunaikurnaiLand &amp; Waters Aboriginal Corporation (GLaWAC) in the planning and delivery of programs to benefit the natural environment, community health and wellbeing and creation of ongoing employment opportunities</p> <p>Investigate opportunities to use cultural burning practices to reduce bushfire risk</p> | Ongoing     | <p>Shared knowledge and skills development</p> <p>Establishment of nursery for the propagation of plants for revegetation. Improve and increase habitat for rare and threatened flora and fauna</p> <p>Pride, health and wellbeing in community</p>                     | Budget allocation/<br>grant funding  |
| <p>Partner with the Latrobe Catchment Landcare Network (LCLN) to deliver programs to improve the natural environment, preserve biodiversity and support sustainable agriculture and land management across the landscape</p>   | Ongoing     | <p>Delivery of joint projects and associated efficiencies</p> <p>Improved biodiversity outcomes and sustainable land management practices</p>   | Within existing resources            |
| <p>Develop and implement a Biodiversity Management Strategy to enhance biodiversity values across Latrobe City Council's bushland reserves, waterways, tracks and trails, and roadsides</p>  | 2023-2024   | <p>Established priorities and goals for the management of bushland reserves and waterways under Council responsibility</p> <p>Reserve Management Plans and Annual Works programs for priority sites</p>   | Within existing resources            |
| <p>Support and grow Committees of Management capability and volunteering for the maintenance of bushland reserves</p>  | 2023-2026   | <p>Increase volunteering and community participation</p>  | Within existing resources            |
| <p>Review the Annual Biodiversity Grants program to refine its focus and align priorities to Council adopted directions and priorities</p>   | 2023 - 2024 | <p>Establishment of sub-categories for weed control grants, revegetation grants, and prioritisation of wildlife habitat and corridors</p>   | Within existing resources            |
| <p>Support and invest in the creation of regional scale biodiversity corridors, including within the Strzelecki-Alpine Biolink, to facilitate wildlife movement and greater genetic diversity of threatened species</p>  | Ongoing     | <p>Creation of habitat corridors between core habitat areas. Improved regional amenity and carbon offsets. Improved waterway health</p> <p>Increased landowner and volunteer participation</p> <p>Greater resilience and genetic diversity of local flora and fauna</p> | Budget allocation /<br>grant funding |
| <p>Review Council's policies with regards to tree retention in public and private development, encouraging retention where possible.</p>   | 2023-2024   | <p>Overall greater urban tree cover</p>   | Within existing resources            |
| <p>Review operational horticultural practices to incorporate sustainable principles</p>  | 2023-2025   | <p>More sustainable horticultural practices</p>   | Within existing resources            |



| Actions  | Timeframe | Outcomes   | Resourcing                |
|--|-----------|--|---------------------------|
| Work in partnership with Keeping Victoria Beautiful, National Tree Day and other stakeholders to deliver education, events, enforcement and collection programs to improve biodiversity, plant trees, reduce litter and illegal rubbish dumping across public places, roadsides, camp grounds, waterways and open spaces | 2023-2026 | Improved presentation of Latrobe City<br>Increase in community participation in planned tree planting and litter collection events - including Clean up Australia Day and national Tree Day<br>Increase in litter and illegal dumping collection programs, infrastructure and resourcing | Within existing resources |
| Continue to deliver and improve roadside weed management programs  | Ongoing   | Identify and reduce outbreaks of new and emerging high threat weeds, reduce overall cover of priority weeds  | Within existing resources |
| Amend Latrobe City Council Local Law Number 2 to require all providers of supermarket trolleys to include a coin / token return or similar system<br>Amend local law number 2 to support the enforcement of noxious weed control beyond blackberries   | 2024-2025 | Reduction in dumped trolleys across Latrobe City, improved ability to enforce noxious weed control on private property   | Within existing resources |
| Investigate the potential for further Gross Pollutant Traps or equivalent systems to prevent litter entering waterways from urban stormwater systems   | 2023-2026 | Gross Pollutant Trap(s) installed annually<br>Reduced litter entering waterways  | Budget allocation         |
| Review and improve wetland design, construction and maintenance guidelines to improve their health, improve local biodiverse and water quality   | 2024-2025 | Improved water quality<br>Reduced maintenance costs overtime   | Within existing resources |
| Review the landscape design standards and plant species guidelines utilised by Council and local developers to support improved biodiversity, drought resilience, reduction in urban heat and reduce on-going maintenance  | 2024-2026 | Increased habitat connections and biodiversity<br>Improve survival rate of plantings<br>Reduced water use and impacts of urban heat  | Within existing resources |
| Trial options for litter collection infrastructure and services at Latrobe City parks, open space / bushland reserves and informal camping areas   | 2023-2025 | Reduced litter across open space, bushland reserves and informal camp grounds  | Budget allocation         |
| Increase public awareness on the benefits of street trees and urban greening   | 2024-2025 | Greater awareness and appreciation of the benefits of street trees and green spaces in urban areas, greater tree retention   | Within existing resources |







# Connecting community with nature

A strong connection with the environment is known to result in a range of mental and physical health benefits, as well as create a sense of pride and ownership in the environment and place we live.

Latrobe City Council is committed to providing safe and accessible spaces for the whole community to enjoy nature-based activities, from walking and cycling paths to our natural bushland reserves, waterways and community spaces.

Providing healthy spaces and facilitating programs in partnership with community groups, schools and health service providers that support community to connect with nature is a key priority.

## **DIRECTIONS FROM COUNCIL PLAN AND MHWP**

- Prioritise a range of public space improvements across the municipality
- Increase accessibility to utilise our green spaces and facilities to connect community and achieve positive health and wellbeing outcomes
- Develop new audiences seeking local arts, cultural and nature-based experiences and entertainment
- Increase community and visitor satisfaction with waterways and bushland reserves
- Increase community participation in environmental education and events
- Council programs and events value and promote engagement with walking, cycling, nature and open spaces
- Develop campaigns to improve community pride in our built and natural assets
- Encourage individuals and communities to plan for, create and maintain a healthy environment that fosters community connectedness
- Ensure that health and wellbeing outcomes for the community are considered, where appropriate, in land use planning

| Actions  | Timeframe | Outcomes  | Resourcing                        |
|--|-----------|---|-----------------------------------|
| Deliver more nature based programs for community groups, primary and secondary schools to experience and learn about local bushland reserves and the biodiversity they support   | Ongoing   | Establishment of 'junior rangers' program and activities  | Within existing resources         |
| Explore the establishment of a community Environmental Reference Group to provide advice and oversee the progression of Council action and community change  | 2024      | Community platform to participate and monitor in changes outlined by the Sustainability Action Plan   | Within existing resources         |
| Continue to improve track and trail conditions and connections between townships to encourage walking and biking, prioritising waterway, bushland reserves and open space corridors. Including developing guidelines for track and trail standards and grading all tracks and trails, for inclusion in the online maps developed for the wayfinding. | 2023-2026 | Improved connectivity of walking and cycling tracks and trails (Connecting Latrobe)<br>Increase in community physical activity and associated health improvements<br>Increased habitat connections and biodiversity | Budget allocation / grant funding |
| Utilise signage, media and other online applications to improve wayfinding to bushland reserves, parklands and nature based tourism opportunities  | 2024      | Greater utilisation and appreciation of green spaces  | Budget allocation                 |
| Celebrate natural environment cultural values through delivery of arts, events and festivals   | Ongoing   | Community participation in events and volunteering<br>Awareness and appreciation of local biodiversity<br>Increase in community taking action to enhance local biodiversity   | Budget allocation / grant funding |
| Deliver library and kindergarten programs to promote sustainability with children and their families to increase connection and awareness of the natural environment and local values  | Ongoing   | Awareness and appreciation of local biodiversity of younger people  | Within existing resources         |
| Promote opportunities for community to participate and learn about sustainability programs and projects including citizen science programs, fauna surveys, bug blitz events and water quality monitoring of local waterways  | Ongoing   | Community participation in events and volunteering<br>Awareness and appreciation of local biodiversity<br>Increase in community taking action to enhance local biodiversity   | Budget allocation/ grant funding  |
| Prepare guidelines to support urban greening in private backyards by providing guidelines and advice regarding amenity, recommended species, drought resilience and species selection to support local biodiversity  | 2024-2025 | Increased habitat connections and biodiversity<br>Reduction in urban heat<br>Reduce urban stormwater runoff   | Within existing resources         |
| Increase public education on the benefits of street trees  | 2025-2026 | Greater understanding and appreciation of the value of trees, leading to greater retention and planting of trees  | Within existing resources         |
| Support the establishment of Community Gardens where the opportunities exist<br>Participate in food security education programs  | 2023-2025 | Community participation in events and volunteering<br>Increase in community knowledge and taking action to enhance local food security  | Within existing resources         |
| Prepare guidelines to support interested community members in the 'planting out' of naturestrips on suitable streetscapes across Latrobe City's urban areas  | 2024-2025 | Increased habitat connections and biodiversity<br>Reduction in urban heat<br>Reduce urban stormwater runoff   | Within existing resources         |





## Creating a circular economy

The continuation of access to landfill services and the provision of reliable kerbside waste collection, recycling, garden organics and hard waste services remains a key priority as we respond to changing requirements introduced by the State Government's Recycling Victoria Policy.

Government and industry partnerships will however be critical to bringing about changes necessary to reform the way in which we provide waste and recycling services. Gippsland councils are working together to create a circular economy and achieve greater recovery and re-use of waste products. Procuring regional scale services to attract greater investment in new infrastructure will support a circular economy in our region.

Latrobe City is well placed to support this initiative with skilled workforce and current expertise in reprocessing of green waste, plastics, cardboard and paper. Recognised by Infrastructure Victoria and State-wide studies, Latrobe City is well placed, with its proximity to Melbourne, access to transport infrastructure and large industrial precincts to grasp opportunities in environmentally responsible resource recovery industries.

Over recent years there has been an increase in litter and illegal dumping behaviour. This remains of high importance to Council and our community, to which additional resources will be required to respond.

### **DIRECTIONS FROM COUNCIL PLAN AND MHWP**

- Promote and attract investment in recycling and re-manufacturing industries to enhance Gippsland's role in the economy
- Work with the Victorian Government to support opportunities in geothermal, hydrogen and Latrobe City's role in the material recovery and reuse industry

| Actions  | Timeframe | Outcomes  | Resourcing   |
|--|-----------|---|--|
| Participate in the Gippswide Kerbside collaborative procurement to support regional waste and resource recovery services to benefit our community and economy  | 2023-2024 | New waste service contracts in place<br>Continuity of waste and recycling services<br>Increase opportunity for local reuse of recycled material   | Within existing resources  |
| Finalise the draft Transition Plan and service modelling to guide the provision of future waste management, recycling services and education programs in accordance with Recycling Victoria Policy and Victorian regulations | 2023-2024 | Compliance with State Government directions   | Budget allocation  |
| Promote and support the establishment of Regional Material Recovery Facility in Latrobe City and associated remanufacturing / repurposing of recovered products  | 2023-2025 | Increase opportunity for local reuse and remanufacturing of recycled material<br>Increase local employment opportunities<br>Reduced waste to landfill   | Within existing resources  |
| Explore and support new manufacturing businesses to support new and emerging industries  | 2024-2026 | Increase opportunity for local reuse and remanufacturing of recycled material<br>Increase local employment opportunities  | Within existing resources  |
| Support the roll out of Victoria's Container Deposit Scheme and ban on single use plastics and disposable cups across Council facilities, community and local business   | 2023-2024 | Compliance with State Government directions.<br>Community and business assisted to make changes   | Within existing resources  |
| Deliver waste management education and events to promote positive waste disposal behaviour, support waste reduction, increase re-use and recycling and reduce litter across Latrobe City                                     | Ongoing   | Reduction of contamination in all methods for collection of recycling and green waste;<br>Complete community based programs to increase reuse and recycling<br>Increase opportunity reuse and remanufacturing of material<br>Reduced contamination of waste streams and littering | Within existing resources/<br>Grant funding approved               |
| Develop waste management plans for, and provide public place recycling infrastructure at, Council recreation, leisure facilities and events to reduce waste and increase recycling   | 2023-2025 | Increase opportunity recycling of waste material<br>Reduced contamination of waste streams<br>Reduced waste to landfill   | Budget allocation  |
| Explore utilisation of green cells or alternative for long term biogas energy generation   | 2026      | Understanding of future renewable energy opportunities and associated revenue opportunities   | Within existing resources  |
| Support community based re-use / repurposing opportunities including exploring establishment of re-use thrift shops at additional waste transfer stations and textiles recycling bins  | 2023-2024 | Increased items sold at Council's transfer station 'thrift shops'<br>Waste services contract awarded with extension of services   | Within existing resources/<br>Budget allocation                    |
| Increase access to hard waste collection services and operating hours of transfer stations provided by Latrobe City Council  | 2023-2024 | Reduction in littering and illegal dumping behaviour across the municipality<br>Increased recycling and reduced waste to landfill   | Budget allocation  |
| Undertake targeted media campaign on illegal rubbish dumping and littering—including promotion and enforcement of penalties for offences   | Ongoing   | Reduction in littering and illegal dumping behaviour across the municipality  | Within existing resources  |
| Introduce roadside litter collection services and the establishment of dedicated Council resource to investigate, rectify and reduce instances of illegal dumping across Latrobe City  | 2024      | Reduction in littering and illegal dumping behaviour across the municipality  | Budget allocation  |
| Investigate the feasibility of new recycling schemes such as textiles, plant pots, etc   | Ongoing   | Greater resource recovery   | Within existing resources  |
| Continue to explore and trial the use of recycled/ recovered products in infrastructure projects   | Ongoing   | Increase opportunity for local reuse and re-manufacturing of recycled material, reduced resource use in new projects  | Within allocated resources/<br>grant funding/<br>budget allocation |



# Definition of terms

## **NET ZERO**

Refers to the balance between the amount of greenhouse gas produced and the amount that is removed from the atmosphere. Achieving a Net Zero target for emissions is important to limiting the impacts of climate change and can be achieved through a combination of reducing emissions and increasing carbon capture and storage.

## **ECOSYSTEM SERVICES**

Refers to the broader benefits that a healthy ecosystem provide to the region, such as clean air and water, food production, climate regulation, and impacts to mental and physical wellbeing.

## **INTERGRATED WATER MANAGEMENT**

Involves a whole of system view to managing water resources, including ecosystem requirements, drinking water, stormwater water management and water treatment and aims to achieve a balance between all water uses.









The Latrobe City Sustainability Action Plan 2023-2033 was developed by Latrobe City Council.

For more information contact Latrobe City Council's Sustainability and Environment Unit.

**Phone:** 1300 367 700

**Email:** [RRE@Latrobe.vic.gov.au](mailto:RRE@Latrobe.vic.gov.au)

## Latrobe City Council

**Phone** 1300 367 700

**Post** PO Box 264, Morwell, 3840

**Email** [latrobe@latrobe.vic.gov.au](mailto:latrobe@latrobe.vic.gov.au)

**Website** [www.latrobe.vic.gov.au](http://www.latrobe.vic.gov.au)

## Service Centres & Libraries

### Morwell

**Corporate Headquarters**

141 Commercial Road, Morwell

**Morwell Library**

63-65 Elgin Street, Morwell

### Moe

**Moe Service Centre and Library**

1-29 George Street, Moe

### Traralgon

**Traralgon Service Centre and Library**

34-38 Kay Street, Traralgon

### Churchill

**Churchill Community Hub**

9-11 Philip Parade, Churchill

*To obtain this information in languages other than English, or in other formats, please contact Latrobe City Council on 1300 367 700.*

